

Mid Continent RotorWay Fly-In

October 12-18 2025

Location airport Hardy Field 3XA1
427 Hidden Valley Rd
Valley View TX 76272
940-902-3210

Welcome to the world's fifth "Mid Continent RotorWay Fly-In"! This week is to be exactly what you bring to it! I sincerely hope that it will be a SAFE and FUN week. We are here to enjoy flying, learn from each other, but hopefully NOT learn from mistakes! PLEASE see that you sign, and return the attached waiver!

**Lets make this week a fun and safe event.
Let's have a good flight briefing as to the many aspects of this field!**

Awards!?

There has been some discussion of a possible yearly award. Sadly this would be for the individual that survived a stupid move? Though we don't want winners, we've had 2 standouts on the last 2 events!

Public attendees

There will be curious public filtering through the field without doubt. Some we'll know and some we won't. Friendly answering questions and interaction will be a great PR for our future operations. Unlike At Bob's events in Florida, we're entirely on private property. Access to this place is by 1 road, shared by one neighbor. Please keep your eyes on pedestrians, and assume they are there to make the worst decisions and try to walk right into a tail rotor! Clear your tails!!!

Taking public for rides in our helicopters is entirely up to you. Just like picking up "packages" at Oshkosh. Let's get them signing Liability waivers as well! Practice good discipline in briefing the passengers! Remind them clearly that you are in a amateur built aircraft, that is not certified by the FAA, so they are basically taking their lives in their own hands. Point out your placard pertaining to the homebuilt as part of your pre-boarding brief. Brief as well, seat belts, emergency egress, (and when). TAIL ROTORS, are deadly!

Camping

Camping on the grounds is encouraged! Depending on the weather leading up to this week will decide if any outdoor fires will be allowed. If so, there is plenty of wood in or near any tree! I recall some had portable outdoor fire pits, those will of course be allowed and helpful. Generators are certainly allowed. I may have a spare if there is a need. There are 6 RV outlets as well. First come First serve, except one for Joe Huff! I have a water supply that you can fill tanks from. Well water, no added chemicals. Gray water can be dumped anywhere, Several parks near by that have facilities to accept Black water. I will strive to have a couple port-a-pottys on the field. Having an idea of how many to expect will be helpful. Though I am not sure how it would work, I understand that they can provide a dump service for the RV's as well.

I'm certainly hoping we don't get into a soggy field situation. Memories of "OshVegas" do loom! RV parks are many within 10 miles as I get a feel for the weather pattern getting closer, I'll be in contact with them to see what they may have available, and if they have an opinion about helicopters flying off of their property.

Vehicular and pedestrian traffic

About the only rules about vehicles are that nothing bigger than a golf cart will be allowed to cross the runway surface! You will see my Lawn Mower and Golf Cart in use. Please stay on the gravel road around the west end of

the runway as primary field crossing of significant vehicles. Be it pedestrian, or light vehicle traffic crossing the runway, be aware that you are crossing an OPEN active runway, and that transient FIXED wing activity may occur.

Wildlife

There is wildlife on the property! To name a few. Mountain lion (not been seen in a few years), bob cats, coyotes, stray dogs, Stray cats, deer, feral hogs, turkeys, skunks, armadillos, homer, coons, etc. . . . Poisonous snakes are also plentiful. MAINLY Cotton mouths near the water, and Copper Heads in the trees. Probably too cold for them to be active, but still be alert where you're stepping! You will always see me armed when on the property. Don't be offended. . . . well, that's ok too :)

Fuel

Fuel. I have a 110 gallon tank with a pump and filter/water separator to it. Like at Bob's this is for your use, at your own discretion, and risk! The pump has a meter on it, and will have a clipboard for you to record your purchases. I won't be chasing you around the field for money but will depend on your honor! I have 91 octane, Ethanol Free fuel. I can bring 93 from local pumps if you prefer for that 100 gallon wagon. You also can land near my large tank at the house for refueling with, again, the 91 octane ethanol free. I do have a couple oil and fuel filters here, if there is a need.

Vendors

I don't see any reason not to sell your wares, if you have such. I know I have stuff! Buy/sell/trade if you will. I've heard rumor of one of the local churches having their youth come out and sell hot dogs or hamburgers, for fundraiser. Not sure how this can be done as they will be in school during this time.

Flying

The best info will be available at an in person brief so we can point at the local obstacles! We'll, for the most part, be using 123.025 for ship to ship and pattern work as well. This will be somewhat discrete for us, but the chatter may also give a better heads up for the Care Flight traffic passing over head often.

Instruction in the hover or taxiing on the field is fine. Depending on the amount of training or pattern traffic we may need to consider other local runways. I've depicted the approximate patterns I fly to try to keep the neighbors happy. Of course there is more room to the south than north to stay off of population. As an alternate, the nearest and easiest is my friends field just east a couple miles, "Tailwheel" on the TAC chart. If instructors need a student into controlled field operations, KDTO will welcome us, but they are "under the veil" for the ADS-B. KGYI North Texas Regional is tower controlled, though no ADS-B requirements.

I've attached scans of maps, and satellite Views that overlay the sectional or Terminal Air chart to highlight obstacles, and immediate local airports, locations and fly out destinations.

Be aware that CareFlight does have frequent flights, and will pass directly over the highway, my field, or just west of it at 1000 feet when southbound to hospital. I've talked to their Chief Pilot and he said that he would put notice to their pilots about the event. I welcomed them to stop by! (don't see that happening) They operate 5 comm radios in all, but southbound they are probably paying attention to KDTO tower, 119.95, and northbound KGLE unicom 123.0

Dangerous Obstacles!

TREES, all about 50 to 60 feet. Plan accordingly. Wires west of the field. 19 Giraffe Balls, but they still don't make you pay attention. FLY OVER THE TOWERS, not between them! Final and Grandest Obstacle! Is the Cell Tower they erected directly ½ mile off the east end of the runway. 300 AGL. White strobe in the day, and red at night. Pattern altitude at 500agl, (1200msl) feet gives 200 feet BUT, you're

generally on a nice base to final at 300 feet! I do use it as a reference for night flight to start the descent to the Helipad in front of my hanger

Maintenance

I know our machines can be needy for our time and tinkering. Unlike Bob's I can't supply quite the hanger space and parts availability! However, I do have quite the number of tools and am ready to help where needed. I will probably still have one fixed wing in my hanger, but as needed/first come first serve, the remaining floor space can be used. I have scales as well if anyone wants to weigh their bird.

Food and Evening Gatherings

As at Bob's, we're talking about gathering at the house/in the hanger for group eating events. What has been working out is we fly out in the late morning/early afternoon, to lunch, then at dark meet in the hanger for a group meal. Marica works very hard to assure we have enough food here, so the sooner we know the numbers, the better. Shoot, we're still eating left overs from last year! (that's an expensive waste) We'll try to brief any and all lunch destinations!

Local Airport information

KGLE Gainesville Texas,

about 10 miles away.

CTAF 123.0 Jet A and 100LL. (Cheapest gas in the area)

KGYI North Texas Regional Airport

Tower 129.575 Ground 124.175 100LL/JetA

33 miles, non radar ADSB not required

tower 903-786-3743

Fly out dining

Megehees catfish 29 miles

Thursday-Friday 5-830pm

Saturday-Sunday 1-830pm

Bebo's & Kathy's

16 mile 214-750-7508

4 miles under the veil, just outside aubrey

1 mile east of Venable Pvt 5XA9

Pelican's Landing

3T0 *Cedar Mills Marina & Resort Airfield* on *Lake Texoma* 33 miles

Freddy's Hamburgers and custard

Gainesville

Possible fly outs

Villa Grande Ranch in Decatur

Catfish O'Harlies in Decatur

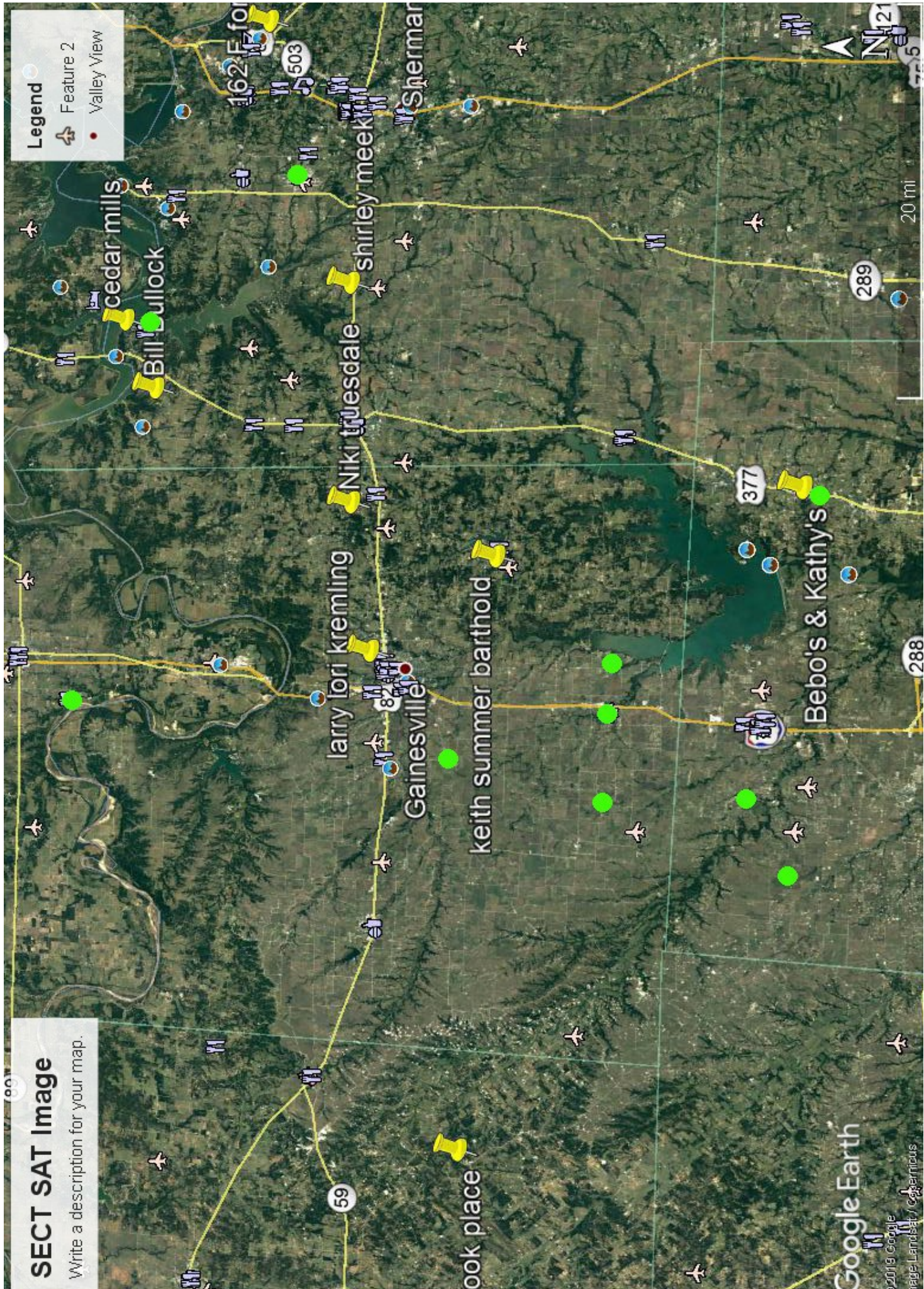
Nick's Italian in Pilot Point

Uncle Betos Mexican in Pilot point.

Freddy's Steak burgers/custard Gainesville (may be obstructed by construction this year)

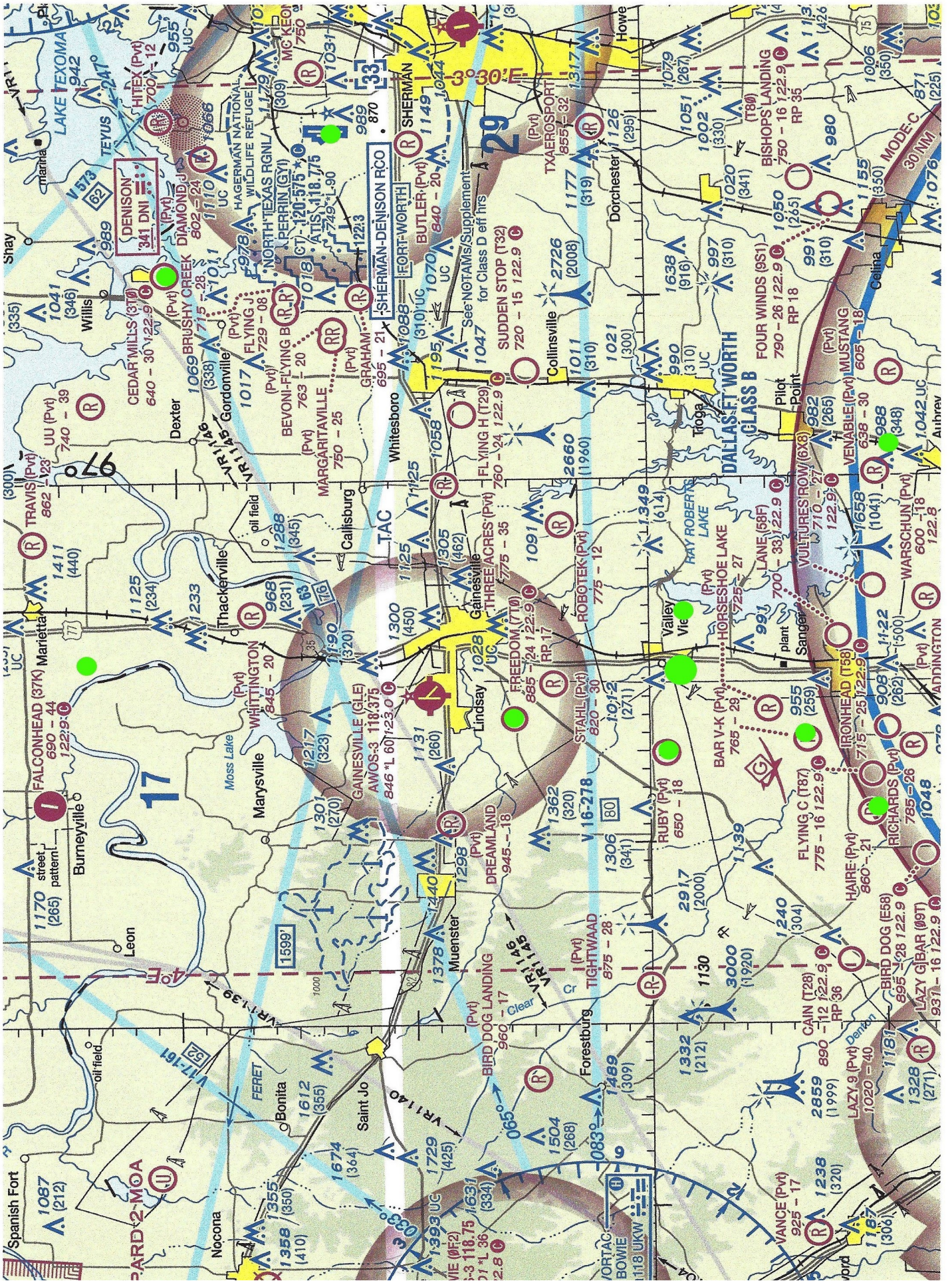
SECT SAT Image

Write a description for your map.



Legend

- Feature 2
- Valley View



Josh Prator

Untitled Map

Write a description for your map.

Legend



barthold place

Untitled Placemark

Valley View

Larry Huffman

charles keni gibson

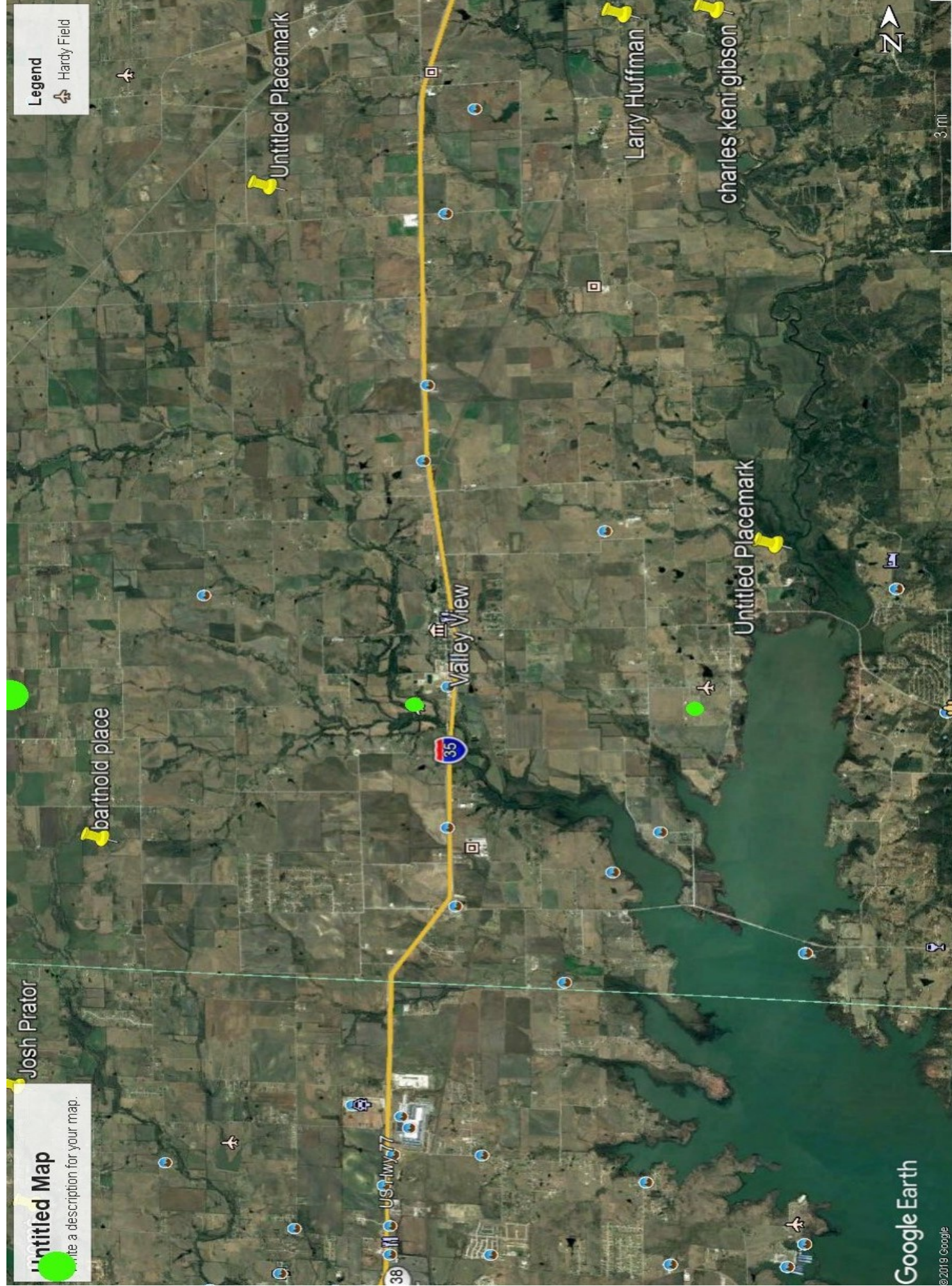
Untitled Placemark

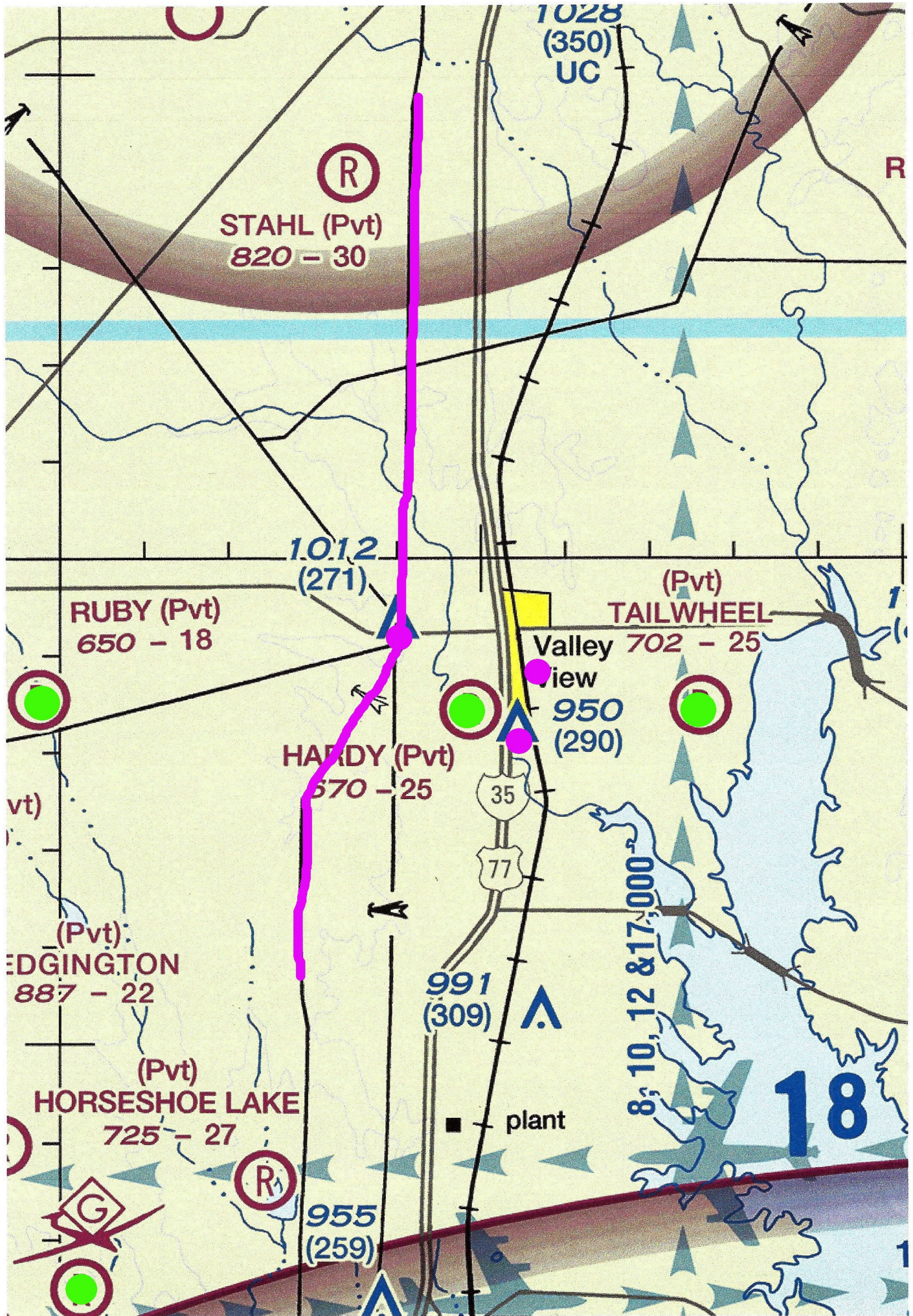
Google Earth

© 2019 Google



3 mi





Untitled Map

Write a description for your map.

Legend



Hardy Field

248

I-35 Frontage Rd

2143

Hidden-Valley-Road



1307

US Hwy 77

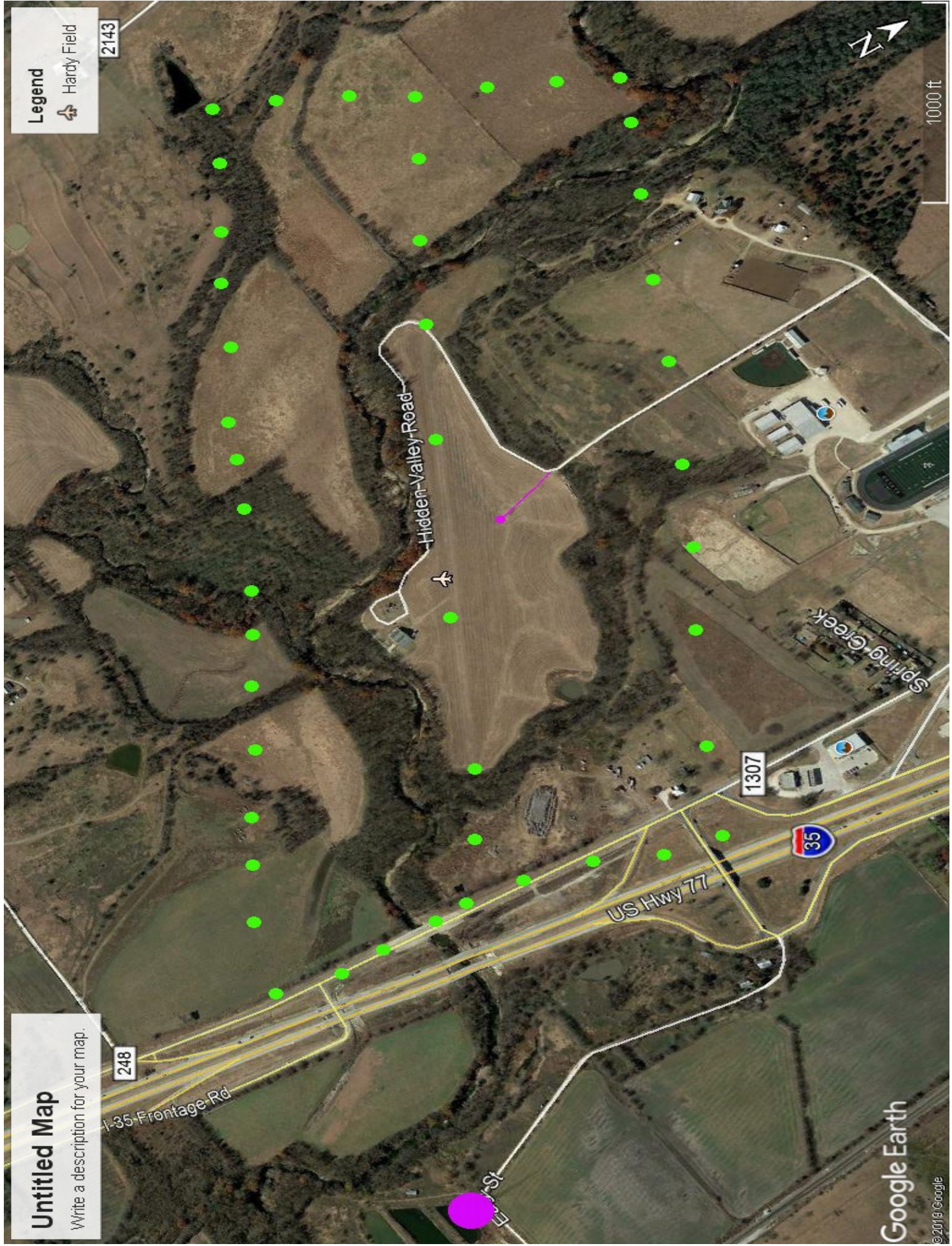


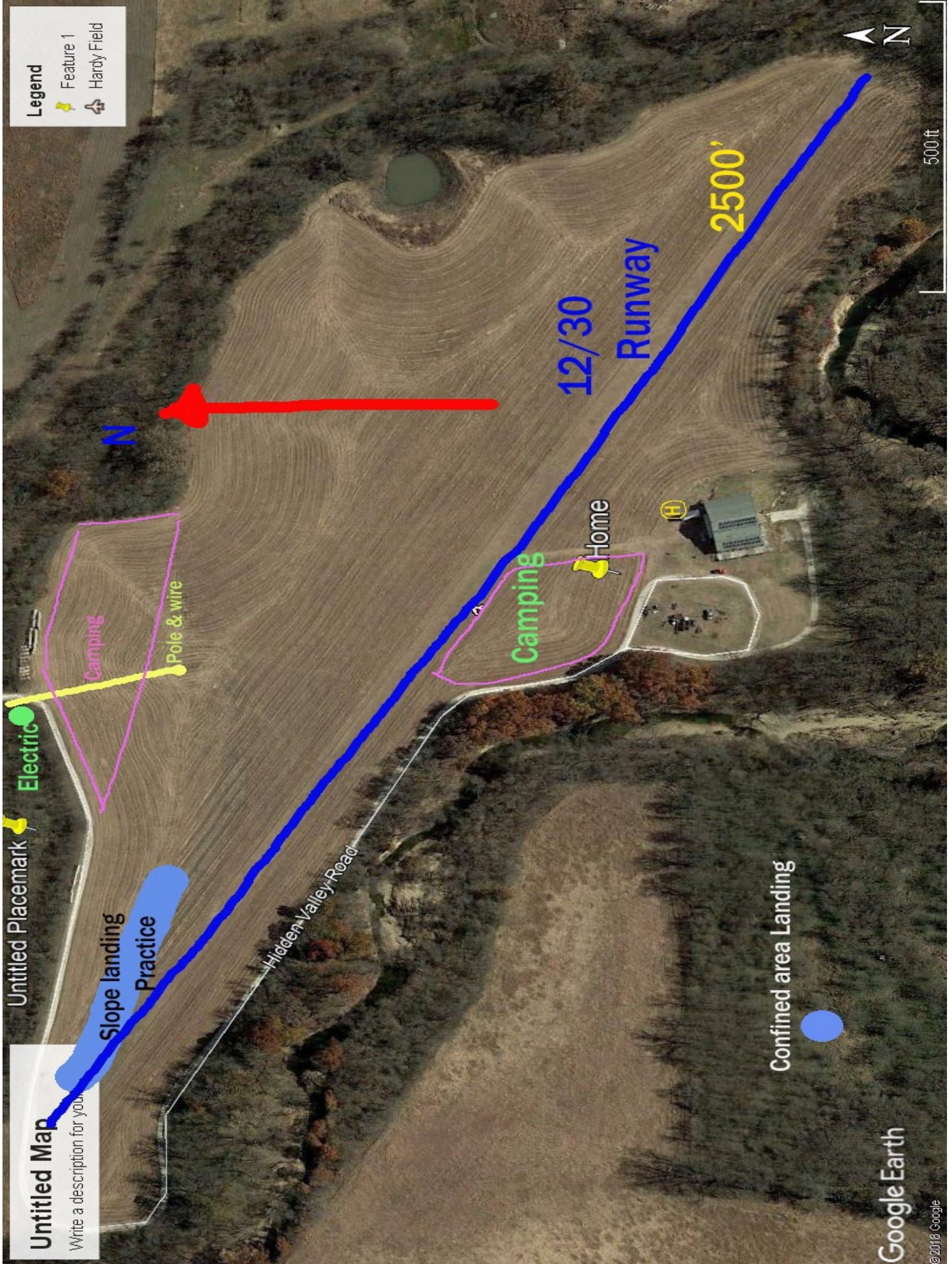
Spring-Creek

1000 ft

Google Earth

© 2018 Google





Legend

- Feature 1
- Hardy Field

500 ft



Untitled Map

Write a description for your map

Untitled Placemark

Electric

Slope landing Practice

Camping

Pole & wire

Camping

Home

Hidden Valley Road

12/30

Runway

2500'

Confined area Landing

Google Earth

© 2018 Google